

# EXECUTIVE DASHBOARD MAIN KPI CARDS

**Report Name:** Executive Dashboard Main KPI Cards

**Report Number:** REP-5028-INT-P

**Report Category:** Premium

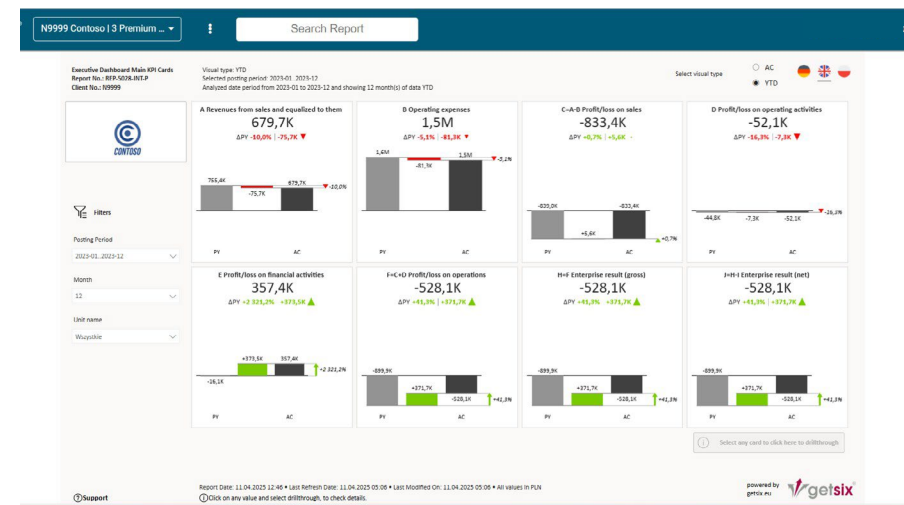
**Report Type:** Interactive



Explore  
the report

**Access link:**

<https://getsix-services.cc/43RVJGt>



## WHY IS THIS REPORT USEFUL?

The **Executive Dashboard Main KPI Cards** report provides a concise and interactive overview of key financial performance indicators (KPIs) based on the BWA (Business Management Reporting / Betriebswirtschaftliche Auswertung) system.

### CUSTOMER BENEFITS

**Instant Insight:** Quickly view key financial KPIs such as revenues, operating profit, or other BWA-based metrics in a compact dashboard format.

**Visual Clarity:** Large KPI cards display AC, PY, and variance values for quick understanding and decision-making.

**Drillthrough Functionality:** Click any KPI card to explore a monthly breakdown and compare it with the same period in the previous year.

**Year-to-Year Comparison:** Easily compare current values (AC or YTD) with the previous year, including variance indicators. By selecting both a posting period and a specific month, you can choose to either analyze a single month (AC) or calculate cumulative values from the start of the posting period up to the selected month (YTD), allowing for flexible trend analysis.

### WHO MIGHT FIND THIS REPORT INTERESTING

**Executives and Management:** For quick, high-level insights into the company's financial performance.

**Accountants and Analysts:** To track key financial indicators with the ability to drill down into detailed metrics.

**Business Owners:** For monitoring essential financial data and making informed decisions based on KPIs.

### WHAT FIGURES THE REPORT SHOWS

Main KPIs are displayed as large cards, providing an at-a-glance view of the financial performance.

Users can select the desired posting period and month for specific data analysis.

The AC (Actual) or YTD (Year-to-Date) calculation type can be selected for all visual components:

- **AC (Actual):** Displays values for the selected month of the selected year.
- **YTD (Year-to-Date):** Displays cumulative values from the start of the financial year to the selected month.

If you click on any KPI card, you can use the „Drillthrough“ option, which will show a detailed breakdown of the selected KPI per month, including variance comparisons to the previous year.

#### Filters:

- **Posting Period:** Select a specific period for analysis.
- **Month of Posting Period:** Choose the month to analyze in relation to the posting period.
- **Calculation Type:** Choose between AC (Actual) or YTD (Year-to-Date) for all KPIs.

#### Interactivity:

- **Drillthrough:** Click on any KPI card to access detailed data for the selected KPI per month, along with variance comparisons to the previous year.